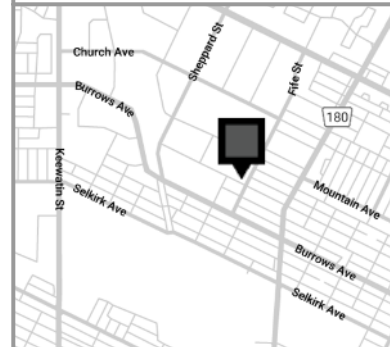




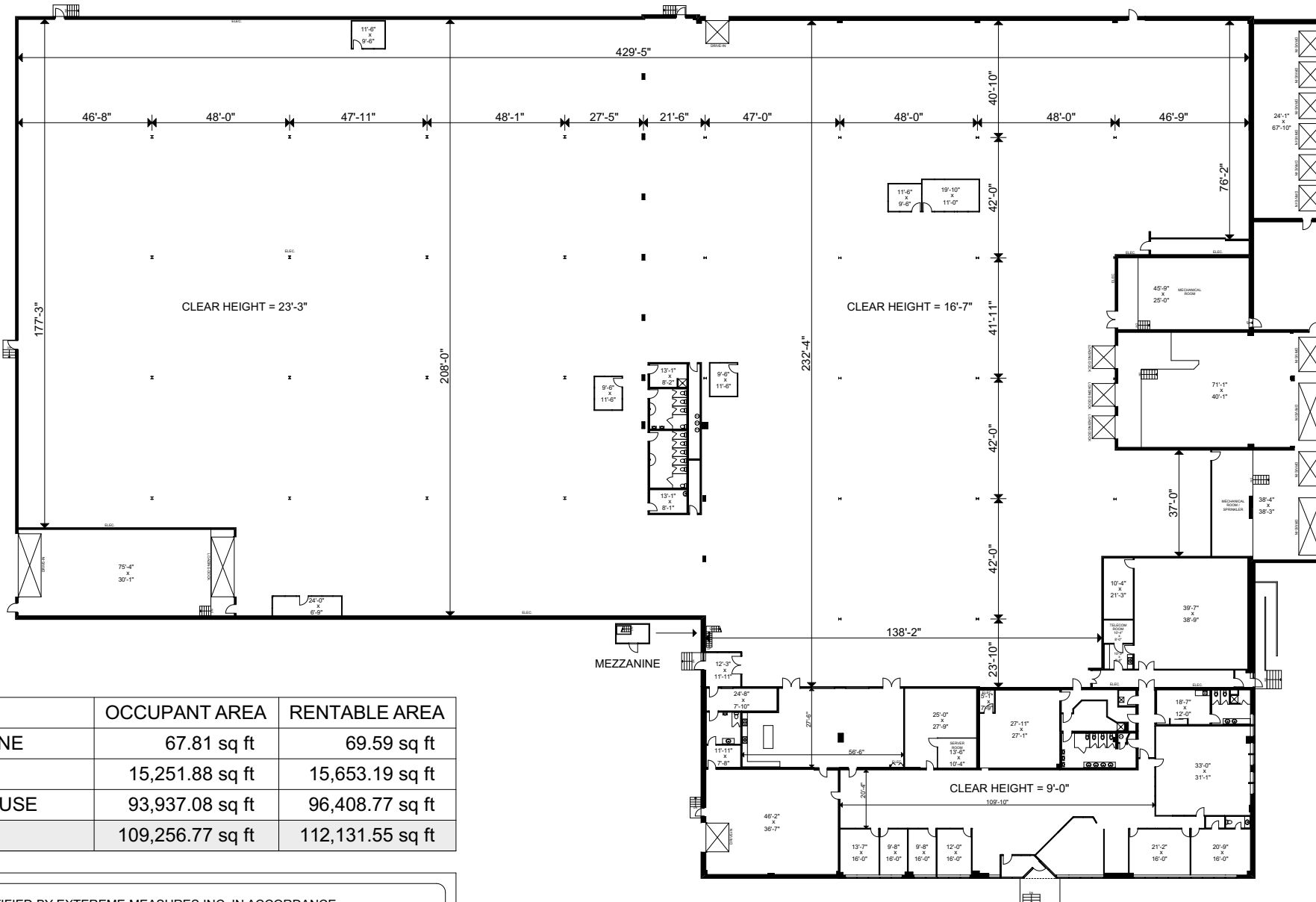
Version: **FP1A**
 Prepared: 26/10/2020
 Measured: 20/08/2020

1345 Redwood Avenue
 Winnipeg, Manitoba
 Canada

Floor 01



This work product has been prepared by Extreme Measures Inc. pursuant to a contract with the Client for the sole benefit of and use by the Client. No third party may rely on this work product without the receipt of a reliance letter from Extreme Measures Inc.



SPACE ID	OCCUPANT AREA	RENTABLE AREA
MEZZANINE	67.81 sq ft	69.59 sq ft
OFFICE	15,251.88 sq ft	15,653.19 sq ft
WAREHOUSE	93,937.08 sq ft	96,408.77 sq ft
TOTAL	109,256.77 sq ft	112,131.55 sq ft

AREA CERTIFIED BY EXTREME MEASURES INC. IN ACCORDANCE WITH THE BOMA 2019 FOR INDUSTRIAL BUILDINGS STANDARD METHOD OF MEASUREMENT (ANSI/BOMA Z65.2-2019)

