

**AVISON
YOUNG**



Industrial spaces for lease

Westport Business Centre

6625 - 6705 Tomken Road
Mississauga, ON



Get more information

Aidan Mallovy*

Principal

905 283 2396

aidan.mallovy@avisonyoung.com

Jordan Boin*

Principal

905 283 2372

jordan.boin@avisonyoung.com

Brooke Boquist*

Associate

905 283 2381

brooke.boquist@avisonyoung.com

Jordan Smith*

Senior Associate

905 283 2374

jordan.smith@avisonyoung.com

*Sales Representative

Property Details

Westport Business Centre



53' trailer access



Bright space with lots of natural light



Wide range of sizes and layouts available



Great access to public transit



Ample free parking



High end industrial complex



White boxing available

Pricing



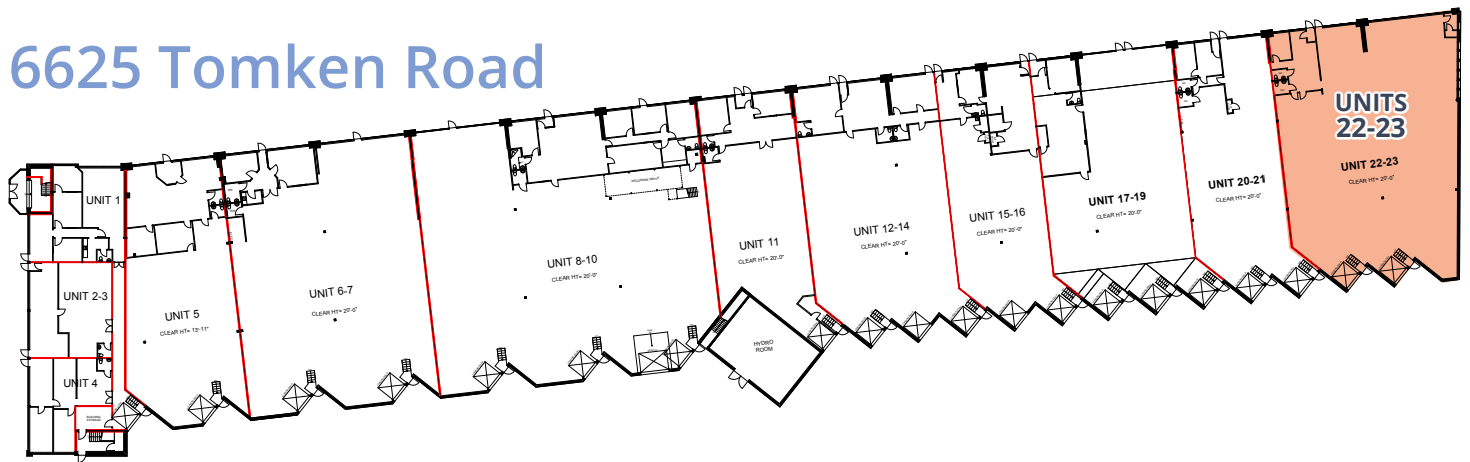
Asking Net Rent

\$11.00 psf to \$18.75 psf

TMI (2024)

\$5.63 psf

6625 Tomken Road

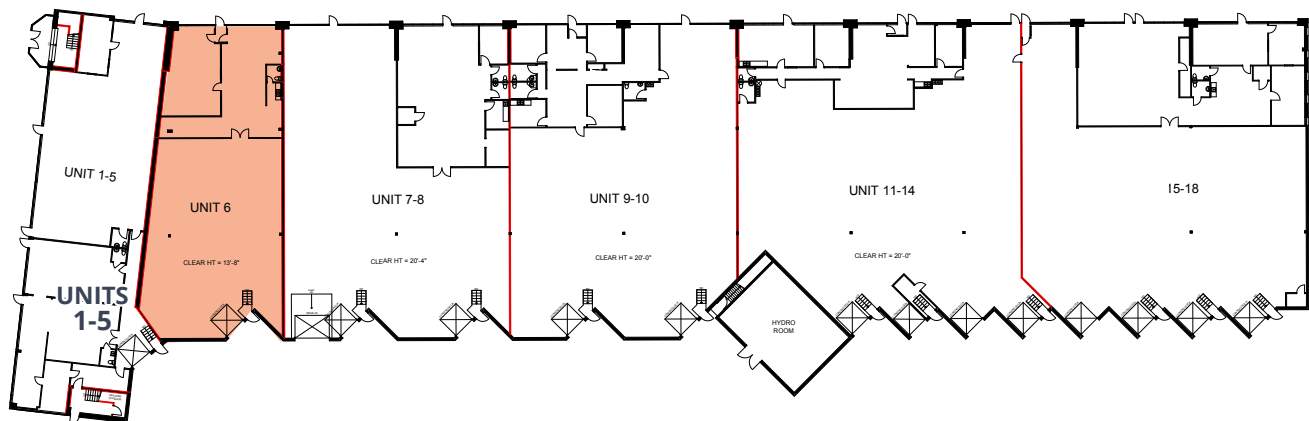


UNIT(S)	SIZE (SF)	OFFICE	SHIPPING	CLEAR HEIGHT	AVAILABLE	ASKING NET RENT	COMMENTS
22-23	8,184	7%	2 T/L	20'	Immediate	\$18.75 psf	End-cap industrial unit. Two truck level shipping doors with dock levelers. Easily accessible for 53' trailers.

6645 Tomken Road

currently no vacancies in this building

6665 Tomken Road

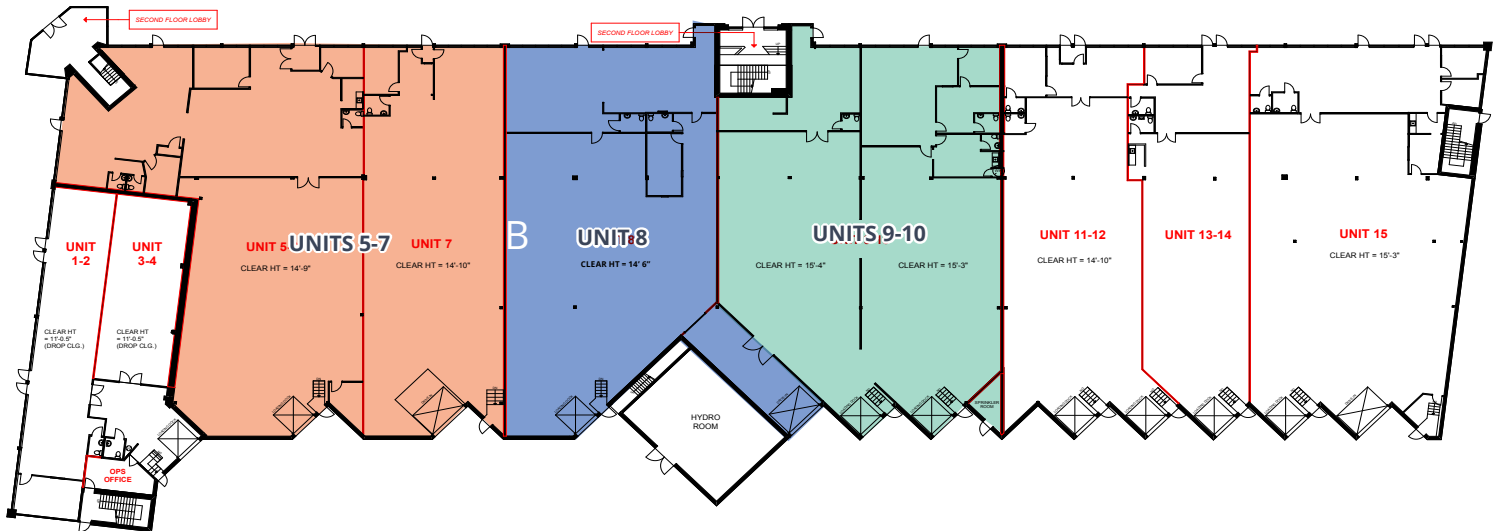


UNIT(S)	SIZE (SF)	OFFICE	SHIPPING	CLEAR HEIGHT	AVAILABLE	ASKING NET RENT	COMMENTS
6	5,286	17%	1 T/L	15' 9"	Immediate	\$11.00 psf	Prime exposure on Tomken Rd. with plenty of natural light.

6685 Tomken Road

currently no vacancies in this building

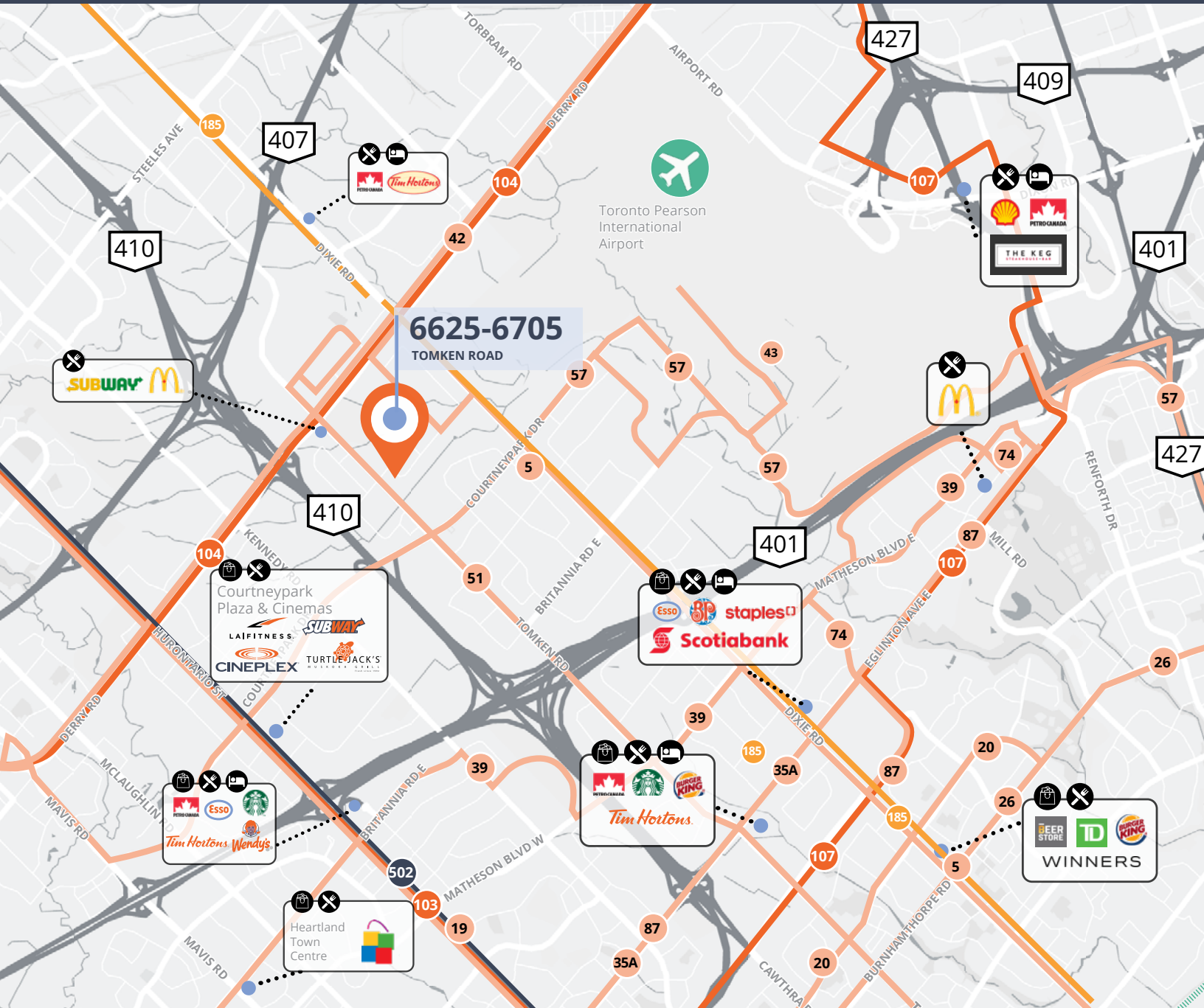
6705 Tomken Road



UNIT(S)	SIZE (SF)	OFFICE	SHIPPING	CLEAR HEIGHT	AVAILABLE	ASKING NET RENT	COMMENTS
5-7	12,408	29%	1 T/L 1 D/I	14' 6"	Immediate	\$11.00 psf	Simple layout with access for 53' trailers.
8	7,300	29%	1 T/L 1 D/I	14' 6"	Immediate	\$18.75 psf	Simple layout with access for 53' trailers.
9-10	8,482	29%	2 T/L	15' 3"	Immediate	\$11.00 psf	Simple layout with access for 53' trailers.

Transit & Amenities

Westport Business Centre



Public Transit



- 5 Dixie
- 19 Hurontario
- 20 Rathburn
- 26 Burnhamthorpe
- 35A Eglinton-Tenth Line
- 39 Britannia
- 42 Derry
- 51 Tomken
- 57 Courtney Park
- 74 Explorer



- 87 Meadowvale-Skymark
- 103 Hurontario Express
- 104 Derry Express
- 107 Malton Express
- 185 Dixie
- 502 Main-Hurontario

Distances from Westport Business Centre

9.9 km to Toronto Airport

1.3 km to Highway 410

3.1 km to Highway 407

3.7 km to Highway 401

About the Landlord

Westport Business Centre

Pure Industrial ("Pure") is one of Canada's leading providers of industrial real estate. Headquartered in Toronto, with offices in Montreal, Quebec City, and Vancouver, Pure owns and operates a 40+ million square foot portfolio of high-quality and well-located assets, ranging from small warehouses to large industrial developments.

Pure is strategically focused on developing and refining its unique industrial real estate offering in order to serve the needs of customers in locations critical to the Canadian supply chain, from the first mile to the last.

Pure prides itself on its professional and customer service-oriented team, and seeks to build long-term relationships with tenants by providing highly responsive and personalized service.

Get more information

Aidan Mallovy*

Principal
905 283 2396
aidan.mallovy@avisonyoung.com

Jordan Boin*

Principal
905 283 2372
jordan.boin@avisonyoung.com

Brooke Boquist*

Associate
905 283 2381
brooke.boquist@avisonyoung.com

Jordan Smith*

Senior Associate
905 283 2374
jordan.smith@avisonyoung.com

*Sales Representative

Avison Young Commercial Real Estate Services, LP, Brokerage
77 City Centre Drive, Suite 301, Mississauga, Ontario L5B 1M5
Office 905 712 2100 Fax 905 712 2937 avisonyoung.ca

© 2024, Avison Young. Information contained herein was obtained from sources deemed reliable and, while thought to be correct, have not been verified. Avison Young does not guarantee the accuracy or completeness of the information presented, nor assumes any responsibility or liability for any errors or omissions therein.

The Plans & Drawings are conceptual only and are subject to change without notice at the discretion of the Landlord.



**AVISON
YOUNG**