

CORE GTA LOCATION FOR LEASE

# 110 Claireport Crescent

Etobicoke, ON



**Jordan Boin**

Sales Representative, Principal  
+1.905.283.2372  
jordan.boin@avisonyoung.com

**Aidan Mallovy**

Sales Representative, Principal  
+1.905.283.2396  
aidan.mallovy@avisonyoung.com

**Brooke Boquist**

Sales Representative, Associate  
+1.905.283.2381  
brooke.boquist@avisonyoung.com

**Jordan Smith**

Sales Representative, Senior Associate  
+1.905.283.2374  
jordan.smith@avisonyoung.com



**AVISON  
YOUNG**

# CORE GTA LOCATION FOR LEASE

## 110 Claireport Crescent

Etobicoke, ON

### Unit Details

Unit	Total Area	Clear Height	Office Area	Shipping	Asking Net Rent	Property Tax/CAM	Availability
4	4,898 sf	16'	948 sf	2 TL	\$18.75 psf	\$4.86 psf	Immediate
5	3,705 sf	16'	1,048 sf	1 TL	\$18.75 psf	\$4.86 psf	Aug 1, 2025
4-5	8,603 sf	16'	1,996 sf	3 TL	\$18.75 psf	\$4.86 psf	Aug 1, 2025

*Management fee is 15% of CAM & Tax*

### Building Description



Located at the intersection of the HWY 427 & HWY 407 providing convenient access



Well appointed offices with plenty of natural light



Well maintained complex with good curb appeal





CORE GTA LOCATION FOR LEASE

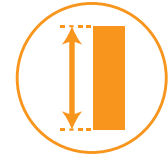
# 110 Claireport Crescent

Etobicoke, ON

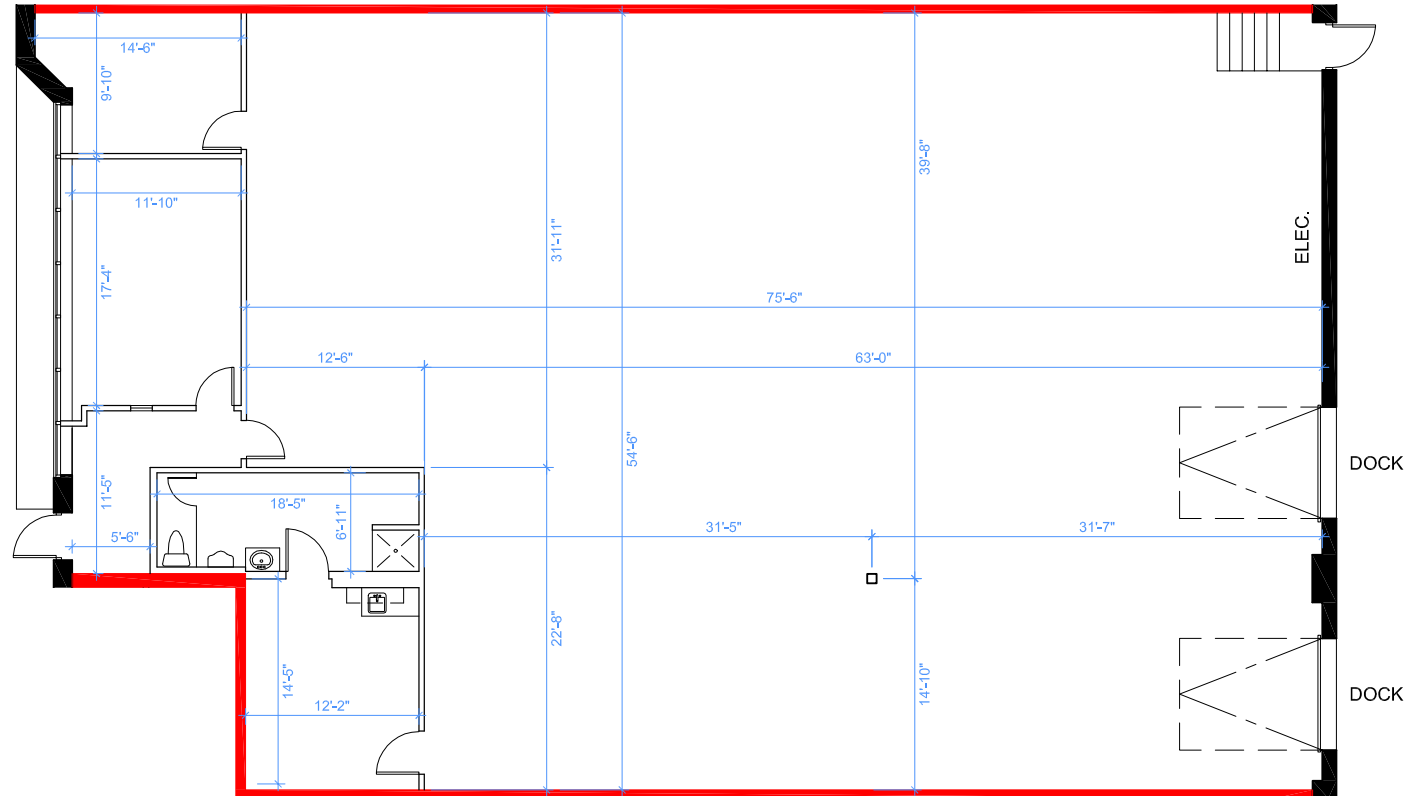
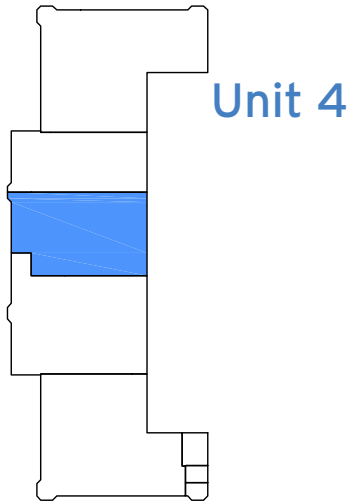
## Unit 4 Floorplan



Shipping  
**2 Truck Level  
Doors**



Clear Height  
**16' 0"**



Total Area  
**4,898 sf**



Office Area  
**948 sf**

CORE GTA LOCATION FOR LEASE

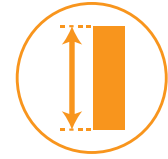
# 110 Claireport Crescent

Etobicoke, ON

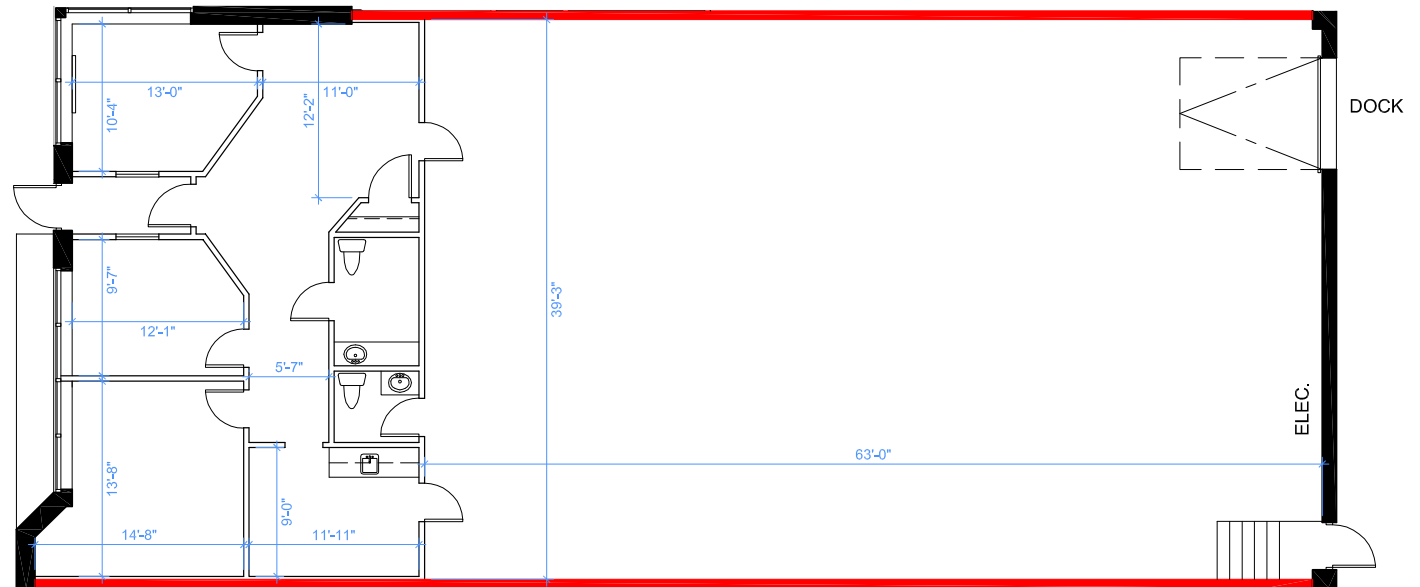
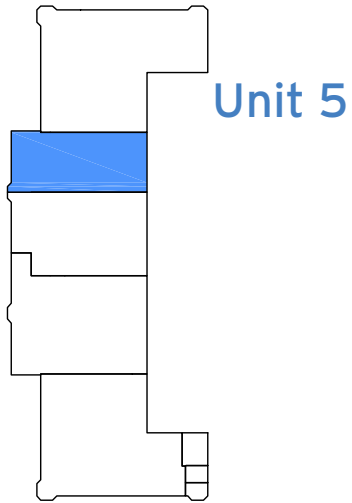
## Unit 5 Floorplan



Shipping  
**1 Truck Level  
Door**



Clear Height  
**16' 0"**



Total Area  
**3,705 sf**



Office Area  
**1,048 sf**

CORE GTA LOCATION FOR LEASE

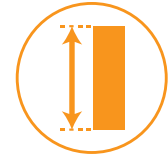
# 110 Claireport Crescent

Etobicoke, ON

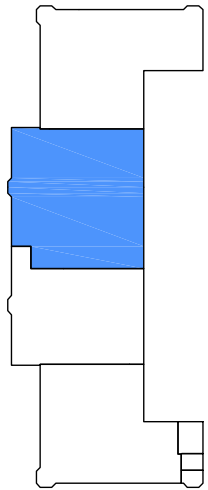
Units 4-5 Floorplan



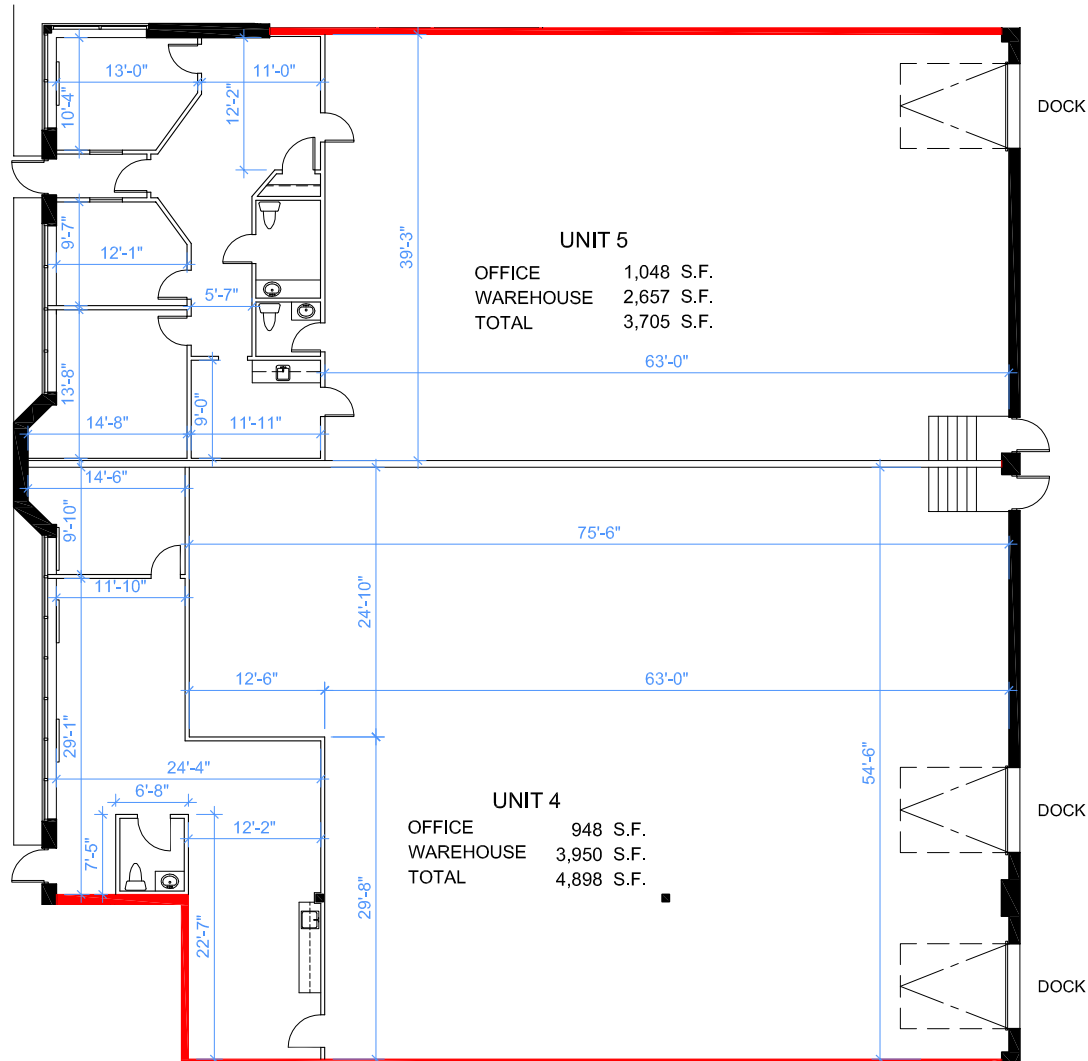
Shipping  
**3 Truck Level  
Doors**



Clear Height  
**16' 0"**



Units 4- 5



Total Area  
**8,603 sf**



Office Area  
**1,996 sf**

# Property Photos - Unit 4







**100%**

Serviced by  
Public Transit



**5 min**

Average Drive time to  
400-Series Highways



**7 KM**

Distance to Toronto Pearson  
International Airport



**30 KM**

Distance to  
Downtown Toronto



**110** Claireport  
Crescent

**110** Claireport  
Crescent

Highway 407

Steeles Ave West

Highway 427

Albion Road

Claireport Cres



# 110 Claireport Crescent

Etobicoke, ON

## Our Team

Pure Industrial (“Pure”) is one of Canada’s leading providers of industrial real estate. Headquartered in Toronto, with offices in Montreal, Quebec City, and Vancouver, Pure owns and operates a 40+ million square foot portfolio of high-quality and well-located assets, ranging from small warehouses to large industrial developments.

Pure is strategically focused on developing and refining its unique industrial real estate offering in order to serve the needs of customers in locations critical to the Canadian supply chain, from the first mile to the last.

Pure prides itself on its professional and customer service-oriented team, and seeks to build long-term relationships with tenants by providing highly responsive and personalized service

[pureindustrial.ca](http://pureindustrial.ca)



Avison Young creates real economic, social and environmental value as a global real estate advisor, powered by people. As a private company, our clients collaborate with an empowered partner who is invested in their success. Our integrated talent realizes the full potential of real estate by using global intelligence platforms that provide clients with insights and advantage. Together, we can create healthy, productive workplaces for employees, cities that are centers for prosperity for their citizens, and built spaces and places that create a net benefit to the economy, the environment and the community.

Avison Young is a 2021 winner of the Canada's Best Managed Companies Platinum Club designation, having retained its Best Managed designation for 10 consecutive years.

[avisonyoung.com](http://avisonyoung.com)





# 110 Claireport Crescent

Etobicoke, ON

## Get more information

### Jordan Boin

Sales Representative, Principal  
+1.905.283.2372  
jordan.boin@avisonyoung.com

### Aidan Mallovy

Sales Representative, Principal  
+1.905.283.2396  
aidan.mallovy@avisonyoung.com

### Brooke Boquist

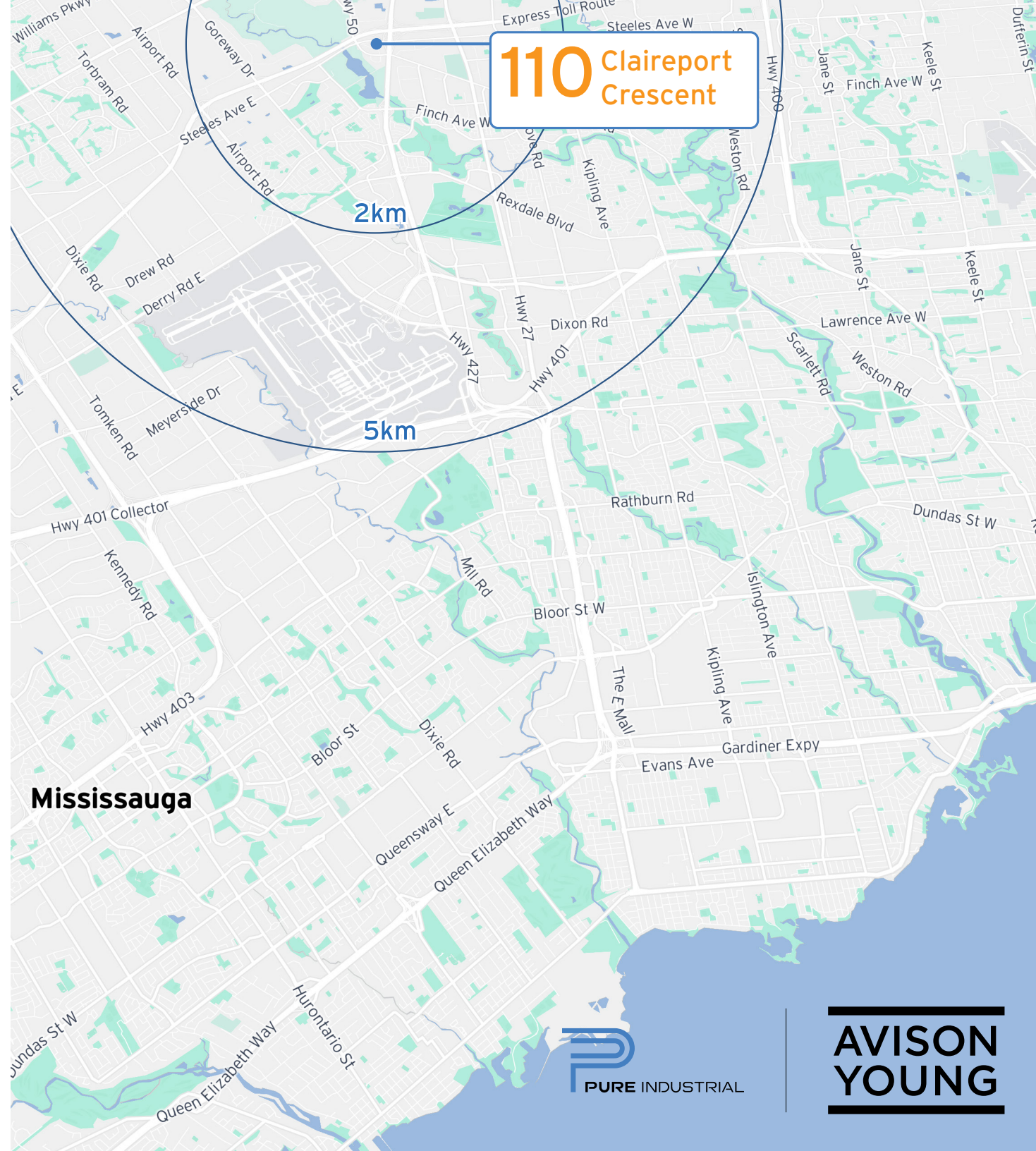
Sales Representative, Associate  
+1.905.283.2381  
brooke.boquist@avisonyoung.com

### Jordan Smith

Sales Representative, Senior Associate  
+1.905.283.2374  
jordan.smith@avisonyoung.com

**Avison Young Commercial Real Estate Services,  
LP, Brokerage**  
77 City Centre Drive, Suite 301,  
Mississauga, Ontario L5B 1M5  
Office 905 712 2100 Fax 905 712 2937  
avisonyoung.ca

© 2024. Avison Young Commercial Real Estate Services, LP, Brokerage. Information contained herein was obtained from sources deemed reliable and, while thought to be correct, have not been verified. Avison Young does not guarantee the accuracy or completeness of the information presented, nor assumes any responsibility or liability for any errors or omissions therein. © Mapbox, © OpenStreetMap



**110** Claireport  
Crescent

2km

5km

**Mississauga**

