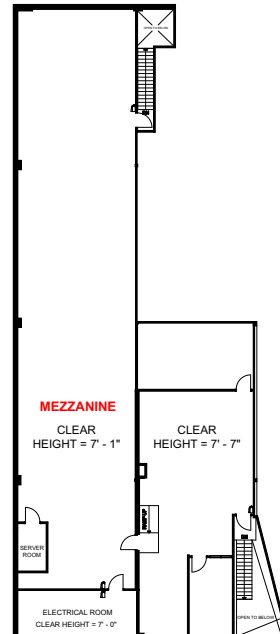
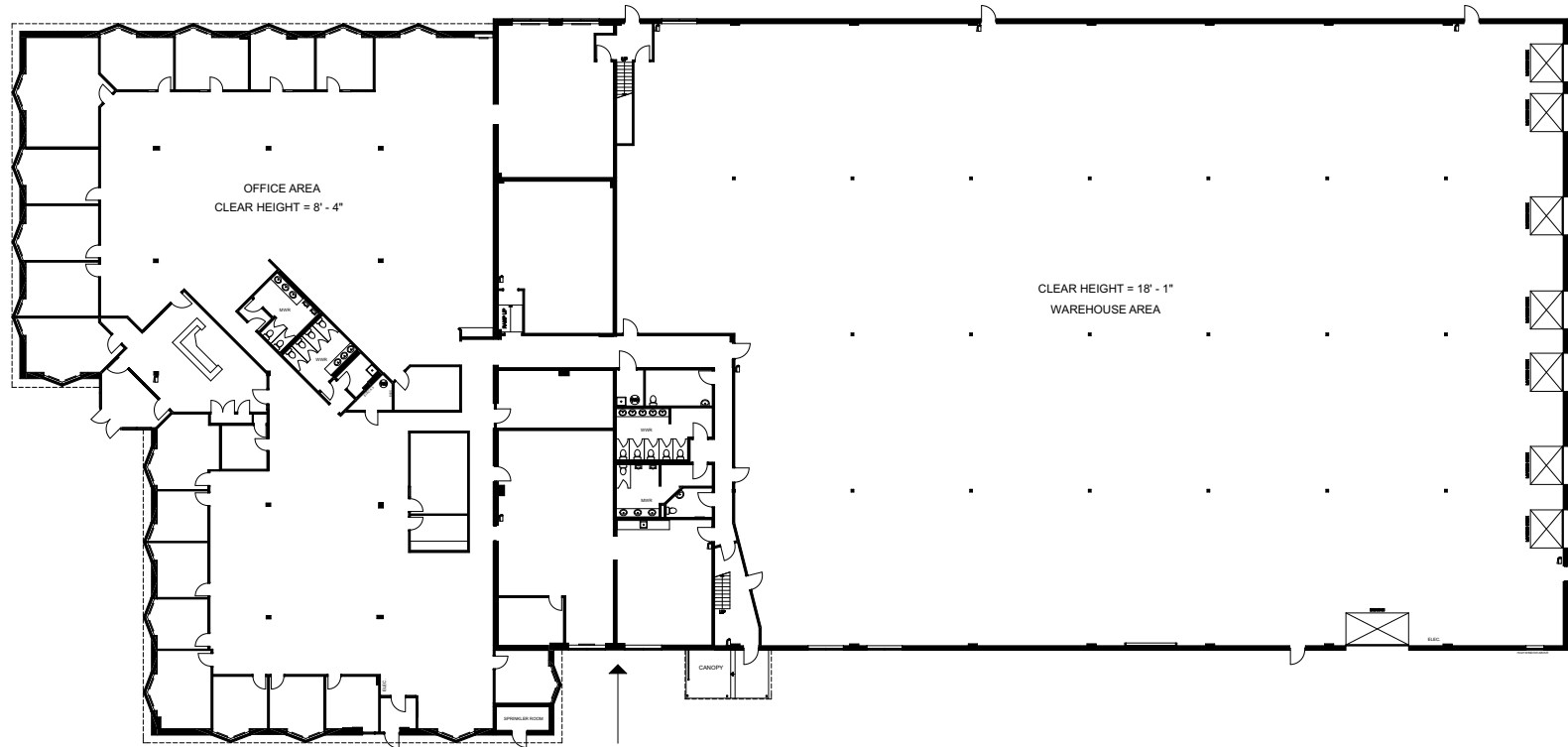




Version:	Prepared:	22/03/2024
FP1A	Measured:	12/03/2024

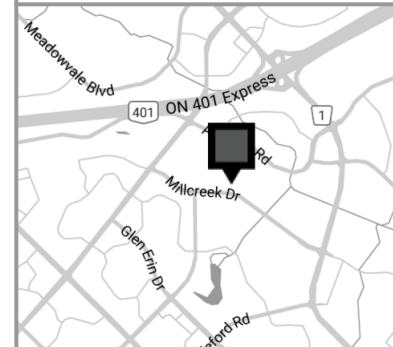
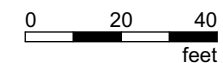
6789 Millcreek Drive
Mississauga, Ontario
Canada

Entire Building



SPACE ID	OCCUPANT AREA	RENTABLE AREA
MEZZANINE	4,745 sq ft	4,782 sq ft
OFFICE	18,267 sq ft	18,409 sq ft
WAREHOUSE	24,653 sq ft	24,844 sq ft
TOTAL	47,665 sq ft	48,035 sq ft

AREA CERTIFIED BY EXTEREME MEASURES INC. IN ACCORDANCE WITH THE BOMA 2019 FOR INDUSTRIAL BUILDINGS STANDARD METHOD OF MEASUREMENT (ANSI/BOMA Z65.2-2019)



This work product has been prepared by Extreme Measures Inc. pursuant to a contract with the Client for the sole benefit of and use by the Client. No third party may rely on this work product without the receipt of a reliance letter from Extreme Measures Inc.