

No.	ISSUED	DATE
1	ISSUED FOR SPA	MAY. 21 2021
2	RE-ISSUED FOR SPA	OCT. 8 2021

No.	REVISION	DATE
-----	----------	------

**BALDASSARRA**  
Architects Inc.

30 Great Gulf Drive, Unit 20 | Concord ON | L4K 0K7  
T. 905.660.0722 | www.baldassarra.ca



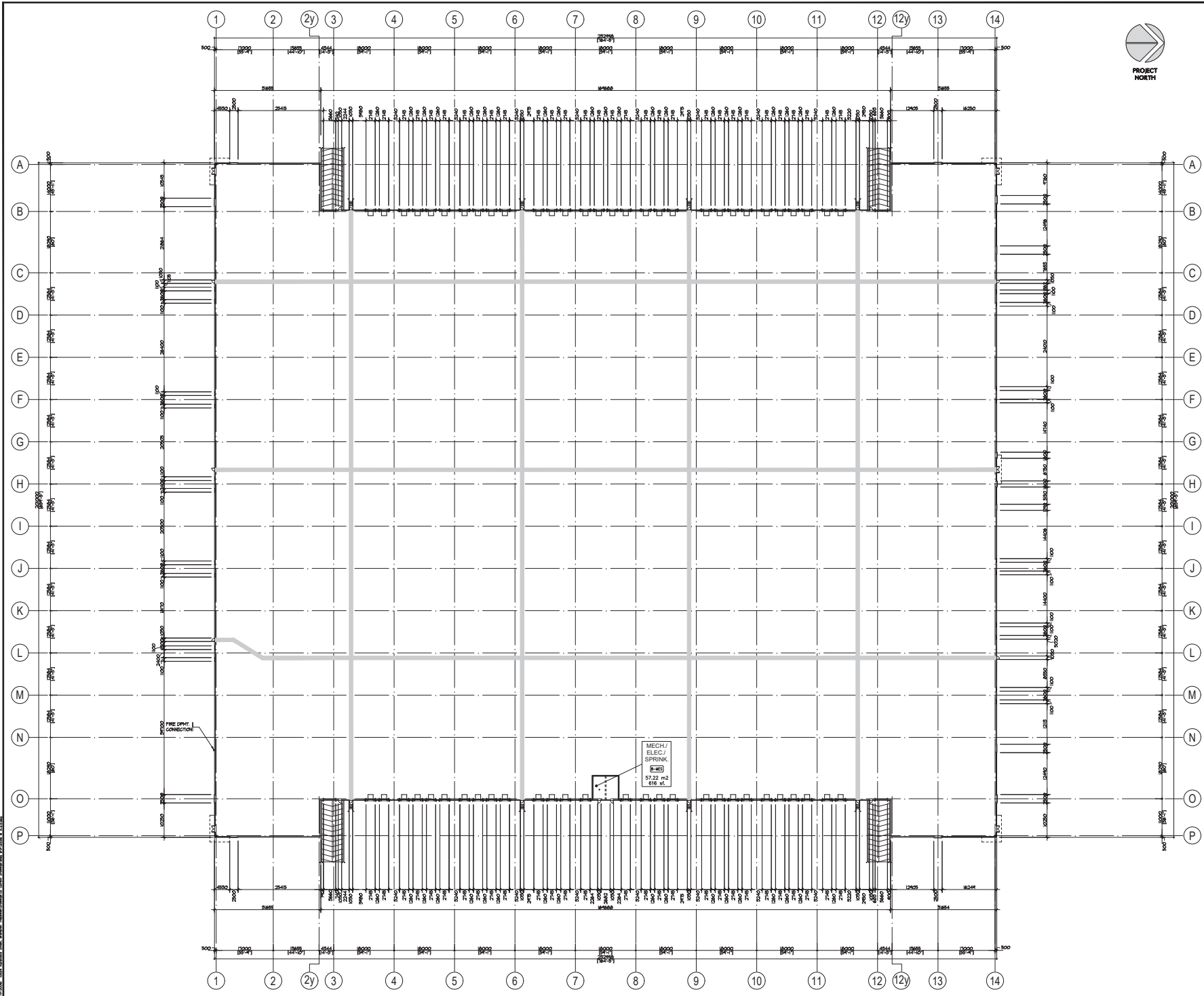
OWNER INFORMATION:

**Sandalwood & Hurontario**  
Brampton, ON

**FLOOR PLAN**  
**Building 'A'**  
SPA-2021-0113

DATE: APR. 2021	DRAWN BY: HP	CHECKED:	SCALE: 1:400
PROJECT No.:	DRAWING No.:		
P-20061	A-2.0		

APR 2021 1:00 PM  
 BALDASSARRA ARCHITECTS INC.  
 30 GREAT GULF DRIVE, UNIT 20, CONCORD ON L4K 0K7  
 T. 905.660.0722  
 WWW.BALDASSARRA.CA



No.	ISSUED	DATE
1	ISSUED FOR SPA	MAY 21 2021
2	RE-ISSUED FOR SPA	OCT 8 2021

No.	REVISION	DATE
-----	----------	------

**BALDASSARRA**  
Architects Inc.

30 Great Gulf Drive, Unit 20 | Concord ON | L4K 0K7  
T: 905.660.0722 | www.baldassarra.ca

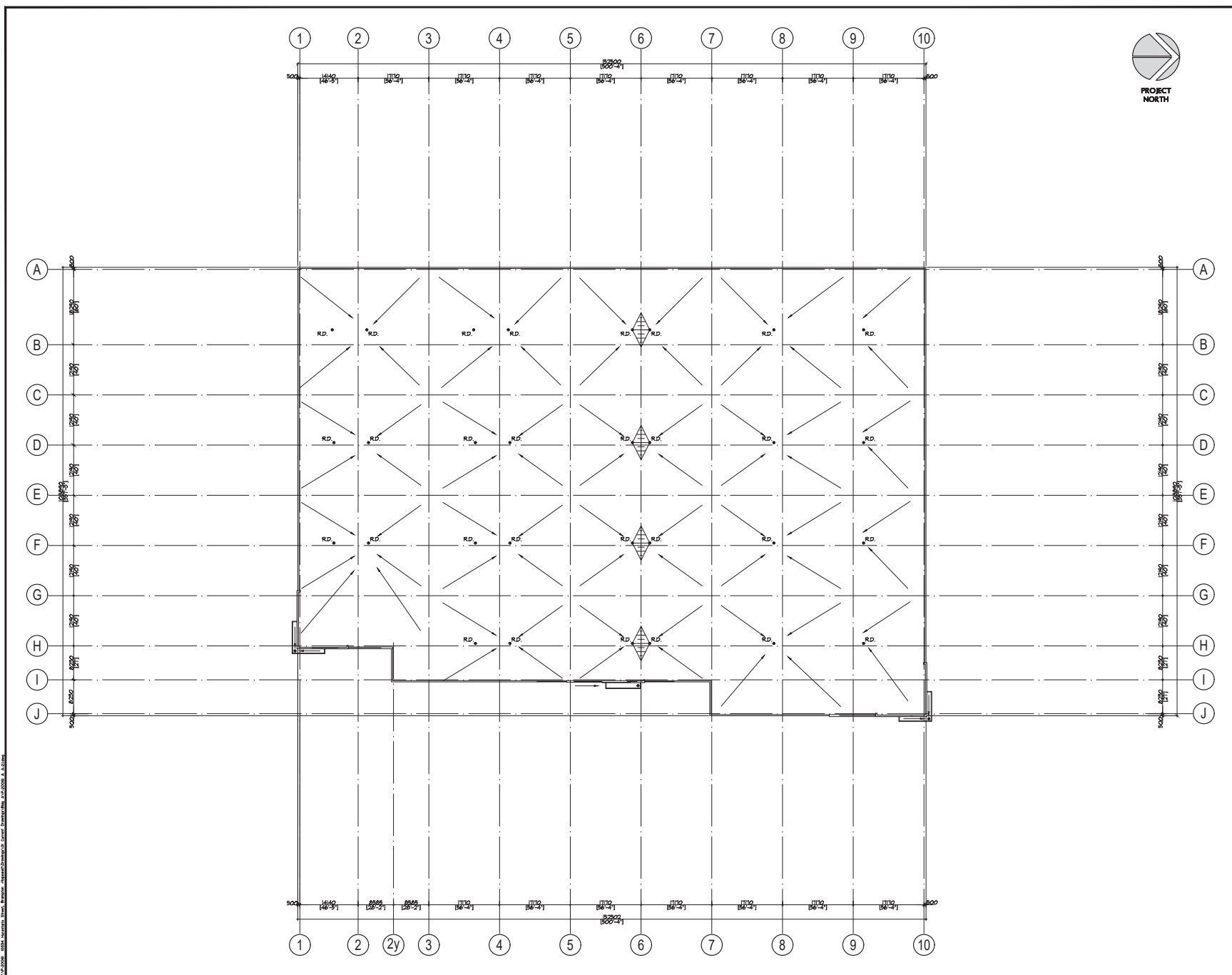


OWNER INFORMATION:

**Sandalwood & Hurontario**

Brampton, ON

FLOOR PLAN Building 'B'			
SPA-2021-0113			
DATE	DRAWN BY	CHECKED	SCALE
APR. 2021	HP		1:400
PROJECT NO.	DRAWING NO.		
P-20061	A- 2.0		



No.	ISSUED	DATE
1	ISSUED FOR SPA	MAY 21 2021
2	RE-ISSUED FOR SPA	OCT. 8 2021



CITY OF BRAMPTON  
 BUILDING ELEVATIONS  
 APPROVED  
 subject to an agreement   
 On This \_\_\_ Day of \_\_\_\_\_  
 Allan Parsons, MCIP, RPP,  
 Director, Development Services

No.	REVISION	DATE
-----	----------	------

**BALDASSARRA**  
 Architects Inc.  
 30 Great Gulf Drive, Unit 20 | Concord ON | L4K 0K7  
 T. 905.660.0722 | www.baldassarra.ca



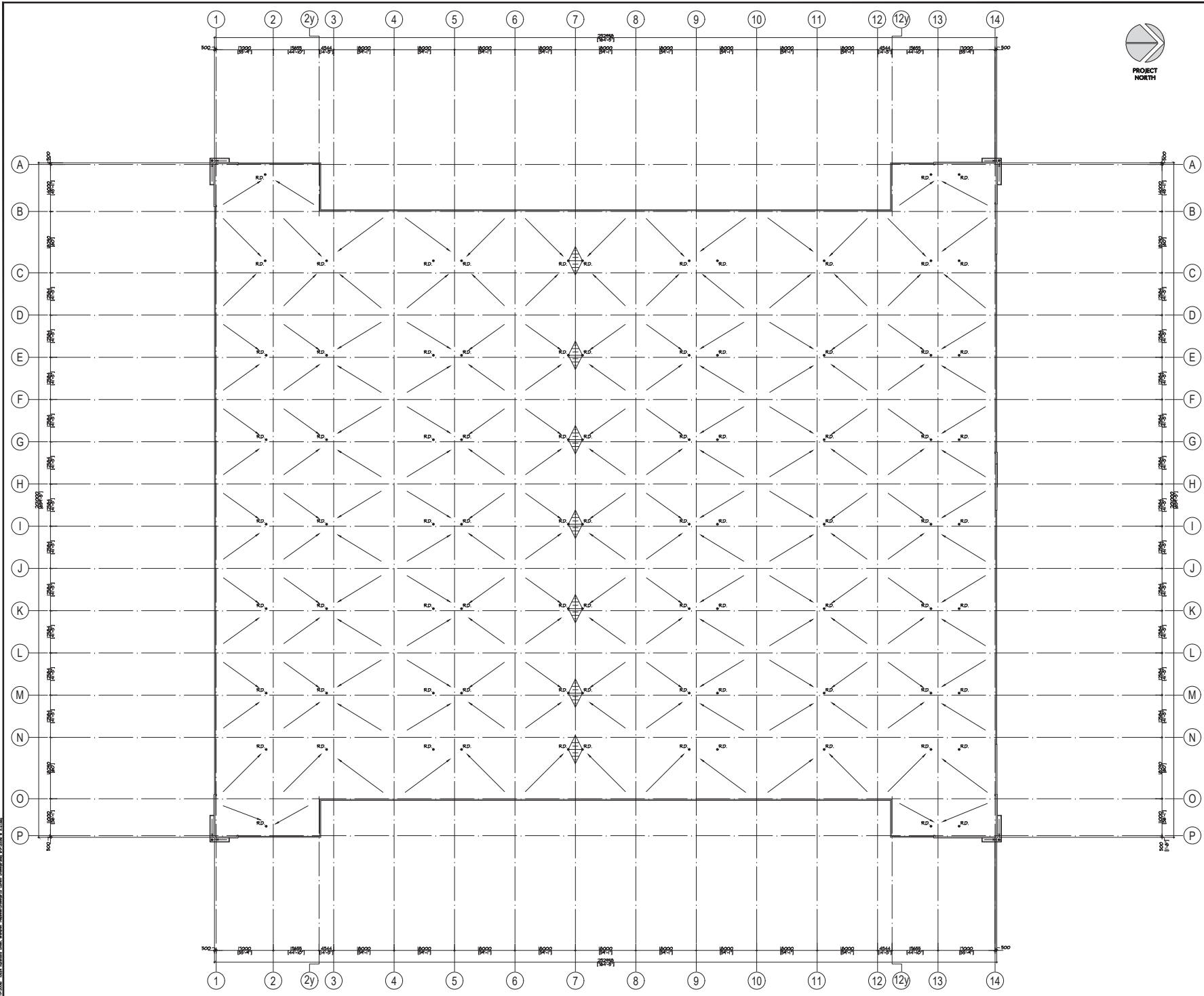
OWNER'S INFORMATION:

**Sandalwood & Hurontario**  
 Brampton, ON

**ROOF PLAN**  
 Building 'A'

DATE	DRAWN BY	CHECKED	SCALE
APR 2021	HP		1:400
PROJECT No.	DRAWING No.		
P-20061	A-2.1		

A-2.1-20061 - 001A - Sandalwood & Hurontario - Approved for SPA - 08/20/21 - 10:00 AM - A. Baldassarra



No.	ISSUED	DATE
1	ISSUED FOR SPA	MAY 21 2021
2	RE-ISSUED FOR SPA	OCT 8 2021

CITY OF BRAMPTON  
 BUILDING ELEVATIONS  
 APPROVED  
 subject to an agreement   
 On This \_\_\_ Day of \_\_\_\_\_  
 Allan Parsons, M.C.P., R.P.P.  
 Director, Development Services

No.	REVISION	DATE
-----	----------	------

**BALDASSARRA**  
 Architects Inc.  
 30 Great Gulf Drive, Unit 20 | Concord ON | L4K 0K7  
 T: 905.660.0722 | www.baldassarra.ca



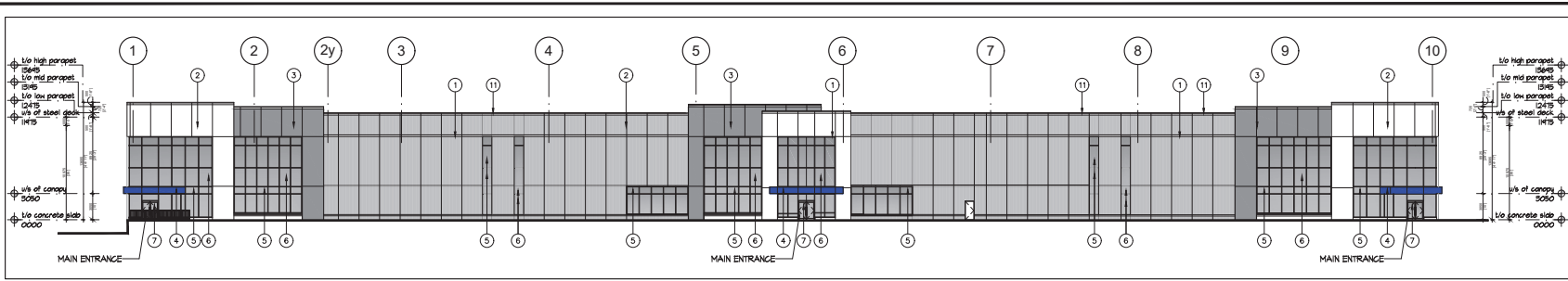
OWNER INFORMATION:

**Sandalwood & Hurontario**

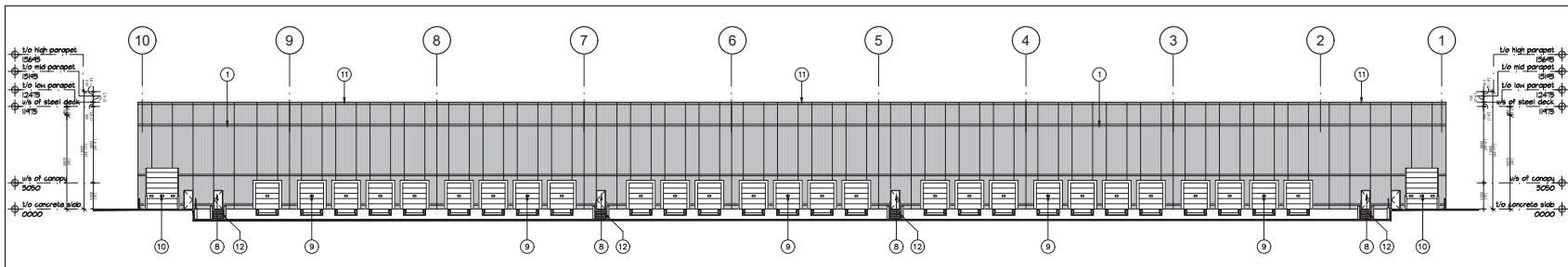
Brampton, ON

ROOF PLAN Building 'B'			
SPA-2021-0113			
DATE	DRAWN BY	CHECKED	SCALE
APR. 2021	HP		1:400
PROJECT NO.	DRAWING NO.		
P-20061	A- 2.1		

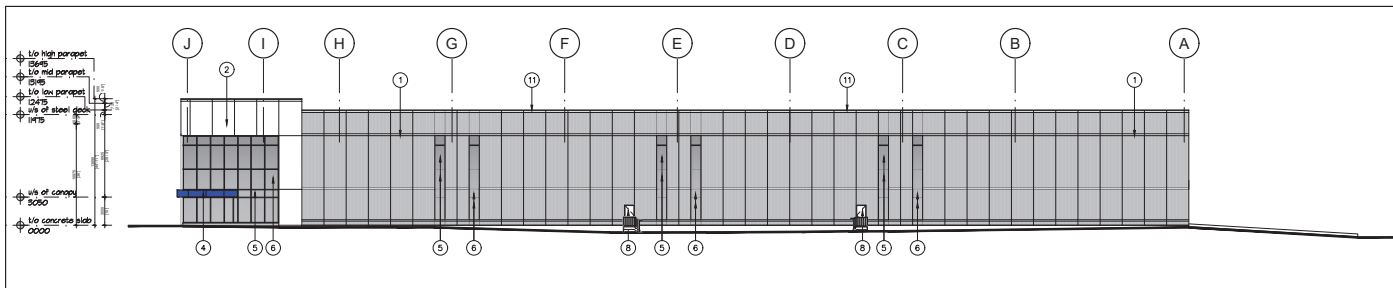
No.	ISSUED	DATE
1	ISSUED FOR SPA	MAY 21 2021
2	RE-ISSUED FOR SPA	OCT. 8 2021



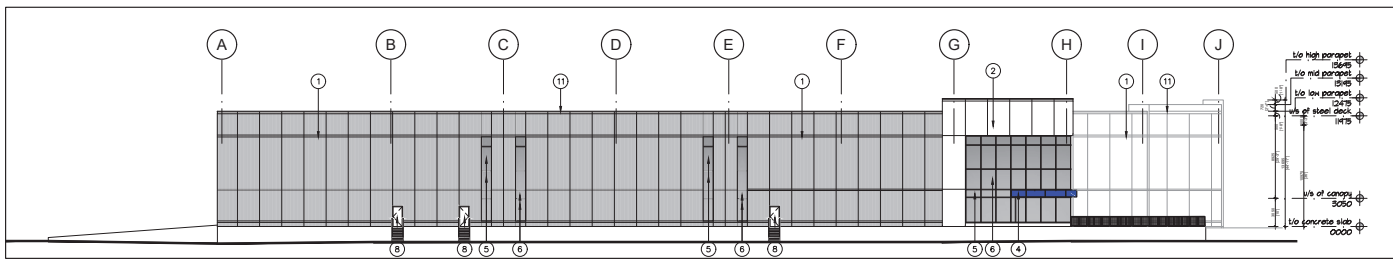
1 East Elevation  
A-3.0 Scale = 1:250



2 West Elevation  
A-3.0 Scale = 1:250



3 North Elevation  
A-3.0 Scale = 1:250



4 South Elevation  
A-3.0 Scale = 1:250

**LEGEND**

- 1 FLEXWALL RIBBED PRECAST CONCRETE PANELS. COLOUR TO BE WHITE.
- 2 INSULATED PRECAST PANELS. (SMOOTH FINISH (COLOUR: WHITE)
- 3 INSULATED PRECAST PANELS (COLOUR: GREY)
- 4 CANOPY CLAD IN ALUMINIUM COMPOSITE PANELS (COLOUR: BLUE)
- 5 THERMAL DOUBLE GLAZING (GREY TINT) IN PREFINISHED ALUMINIUM CURTAIN WALL FRAMES. COLOUR OF CURTAIN WALL CAPS CHARCOAL ANODIZED ALUMINIUM. CW BRD-FRIENDLY VISUAL MARKERS
- 6 SPANDREL GLAZING IN PREFINISHED ALUMINIUM CURTAIN WALL FRAMES. COLOUR OF SPANDREL: DINKY GREY TINT. COLOUR OF CURTAIN WALL CAPS CHARCOAL ANODIZED ALUMINIUM
- 7 CLEAR TEMPERED THERMAL GLASS AND ALUMINIUM DOORS); COLOUR OF ALUMINIUM TO MATCH CURTAIN WALL CAPS.
- 8 INSULATED HOLLOW METAL MAN DOOR IN THERMAL PRESSED STEEL FRAME. DOOR AND FRAME PAINTED TO MATCH ADJACENT INSULATED PRECAST
- 9 INSULATED HOLLOW METAL SECTIONAL OVERHEAD DOOR CW 305mm x 200mm (W/HS) LEXAN INSERT 4270mm x 4880mm (DW/HS) COLOUR TO BE FUTURE SELECTION.
- 10 INSULATED HOLLOW METAL SECTIONAL OVERHEAD DOOR CW DOCK SEAL, DOCK LEVELLER, DOCK BUMPER AND 305mm x 200mm (DW/HS) LEXAN INSERT. 2000mm (W) x 3500mm (H). COLOUR TO BE WHITE.
- 11 PREFINISHED METAL CAP FLASHING. COLOUR TO MATCH PRECAST BELOW.
- 12 STEEL GRATE EXTERIOR STAIR. PRIMED & MARINE OIL BASE PAINTED GREY.

**NOTE:**  
"IF ANY ROOF TOP UTILITY AND MECHANICAL EQUIPMENT ARE VISIBLE FROM PUBLIC VIEW, IT WOULD APPROPRIATELY SCREENED WITH SCREENING THAT IS ARCHITECTURALLY CONSISTENT AND INTEGRATED WITH THE DESIGN OF THE BUILDING."

CITY OF BRAMPTON  
BUILDING ELEVATIONS  
APPROVED  
subject to an agreement   
On This \_\_\_\_ Day of \_\_\_\_\_  
  
Allan Parsons, MCIP, RFP, PMP  
Director, Development Services

No.	REVISION	DATE
-----	----------	------

**BALDASSARRA**  
Architects Inc.

30 Great Gulf Drive, Unit 20 | Concord ON | L4K 0K7  
T. 905.660.0722 | www.baldassarra.ca



OWNERS INFORMATION:  
Pure Hurontario Street Holdings ULC & HD Hurontario Inc.

**Sandalwood & Hurontario**  
Brampton, ON

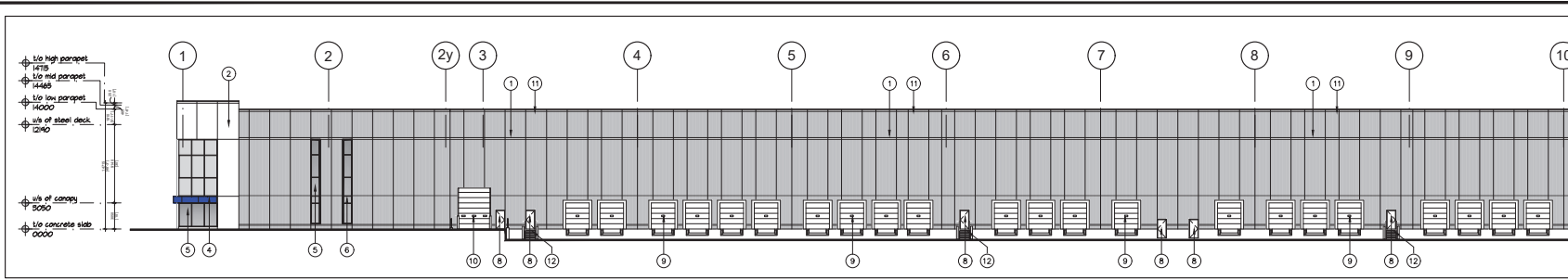
**ELEVATIONS**  
Building 'A'  
SPA-2021-0113

DATE	DRAWN BY	CHECKED	SCALE
APR. 2021	HP		AS SHOWN

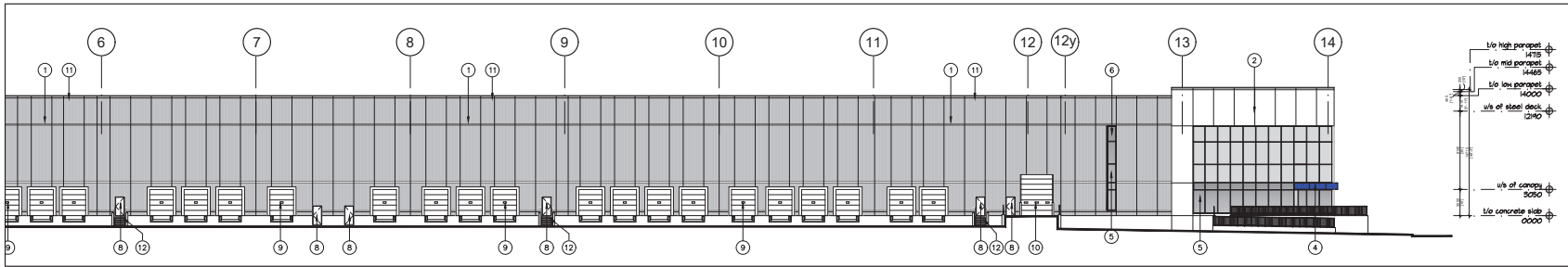
PROJECT No. P-20061 DRAWING No. **A-3.0**

2021-05-20 10:58:33 AM  
 C:\Users\jparsons\OneDrive\Documents\Baldassarra\2021\SPA-2021-0113\Drawings\A-3.0.dwg  
 A. BALDASSARRA

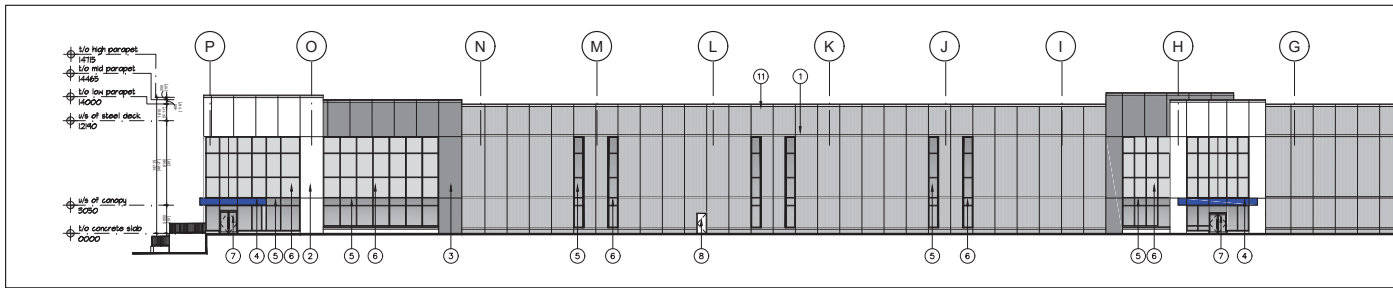
No.	ISSUED	DATE
1	ISSUED FOR SPA	MAY 21 2021
2	RE-ISSUED FOR SPA	OCT 8 2021



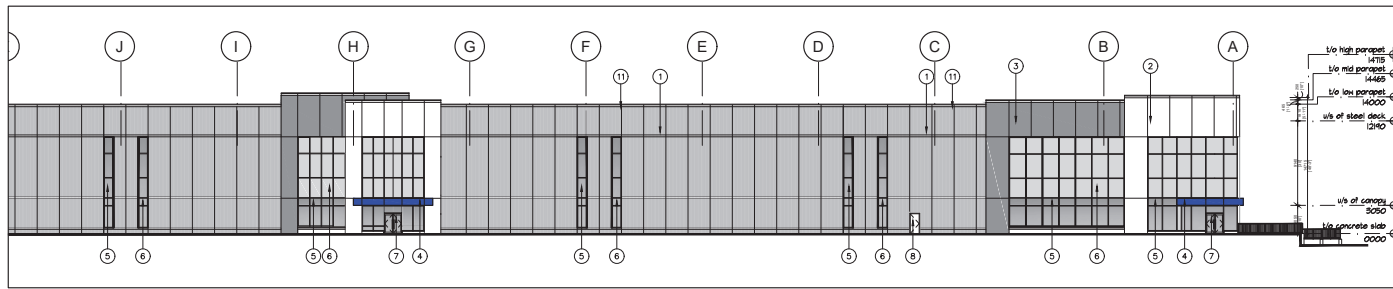
1 Partial East Elevation  
A-3.0 Scale = 1:250



2 Partial East Elevation  
A-3.0 Scale = 1:250



3 Partial North Elevation  
A-3.0 Scale = 1:250



4 Partial North Elevation  
A-3.0 Scale = 1:250

**LEGEND**

- 1 FLEX WALL RIBBED PRECAST CONCRETE PANELS. COLOUR TO BE WHITE.
- 2 ALUMINUM COMPOSITE PANELS BY ALPOLIC OR APPROVED EQUAL. COLOUR: WHITE.
- 3 ALUMINUM COMPOSITE PANELS BY ALPOLIC OR APPROVED EQUAL. COLOUR: GREY.
- 4 CANOPY CLAD IN ALUMINUM COMPOSITE PANELS (COLOUR: BLUE)
- 5 THERMAL DOUBLE GLAZING (GREY TINT) IN PREFINISHED ALUMINUM CURTAIN WALL FRAMES. COLOUR OF CURTAIN WALL CAPS: CHARCOAL ANODIZED ALUMINUM. CW BRD-FRIENDLY VISUAL MARKERS.
- 6 SPANDREL GLAZING IN PREFINISHED ALUMINUM CURTAIN WALL FRAMES. COLOUR OF SPANDREL: DAIRY GREY TINT. COLOUR OF CURTAIN WALL CAPS: CHARCOAL ANODIZED ALUMINUM.
- 7 CLEAR TEMPERED THERMAL GLASS AND ALUMINUM DOORS. COLOUR OF ALUMINUM TO MATCH CURTAIN WALL CAPS.
- 8 INSULATED HOLLOW METAL MAN DOOR IN THERMAL PRESSED STEEL FRAME. DOOR AND FRAME PAINTED TO MATCH ADJACENT INSULATED PRECAST.
- 9 INSULATED HOLLOW METAL SECTIONAL OVERHEAD DOOR CW 305mm x 200mm (W) X LEXAN INSERT 4275mm x 4885mm (H) (W) COLOUR TO BE FUTURE SELECTION.
- 10 INSULATED HOLLOW METAL SECTIONAL OVERHEAD DOOR CW DOCK SEAL, DOCK LEVELLER, DOCK BARRIERS AND 305mm x 200mm (W) X LEXAN INSERT. 305mm (W) X 355mm (H). COLOUR TO BE WHITE.
- 11 PREFINISHED METAL CAP FLASHING. COLOUR TO MATCH PRECAST BELOW.
- 12 STEEL GRATE EXTERIOR STAIR. PRIMED & MARINE OIL BASE PAINTED GREY.

**NOTE:**  
TYPICAL ROOF TOP UTILITY AND MECHANICAL EQUIPMENT ARE VISIBLE FROM PUBLIC VIEW. IT WOULD APPROPRIATELY SCREENED WITH SCREENING THAT IS ARCHITECTURALLY CONSISTENT AND INTEGRATED WITH THE DESIGN OF THE BUILDING.

**CITY OF BRAMPTON**  
BUILDING ELEVATIONS  
APPROVED  
subject to an agreement   
On This \_\_\_ Day of \_\_\_\_\_

Allan Parsons, MCIP, RPP,  
Director, Development Services

No.	REVISION	DATE
-----	----------	------

**BALDASSARRA**  
Architects Inc.

30 Great Gulf Drive, Unit 20 | Concord ON | L4K 0K7  
T. 905.660.0722 | www.baldassarra.ca



OWNERS INFORMATION

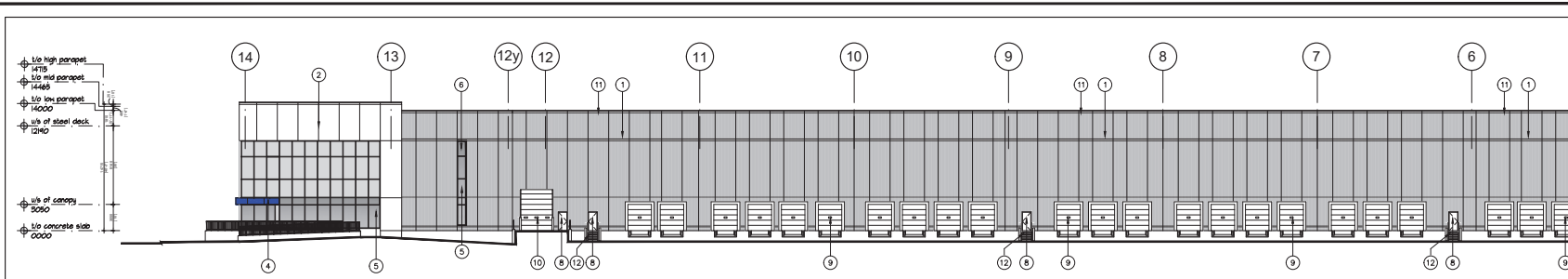
**Sandalwood & Hurontario**  
Brampton, ON

**ELEVATIONS**  
Building B  
SPA-2021-0113

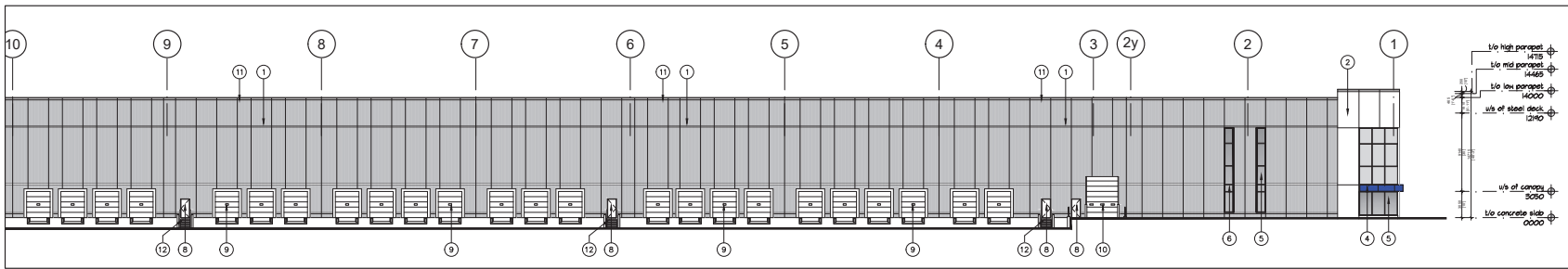
DATE	DRAWN BY	CHECKED	SCALE
APR 2021	HP		AS SHOWN

P-20061 **A-3.0**

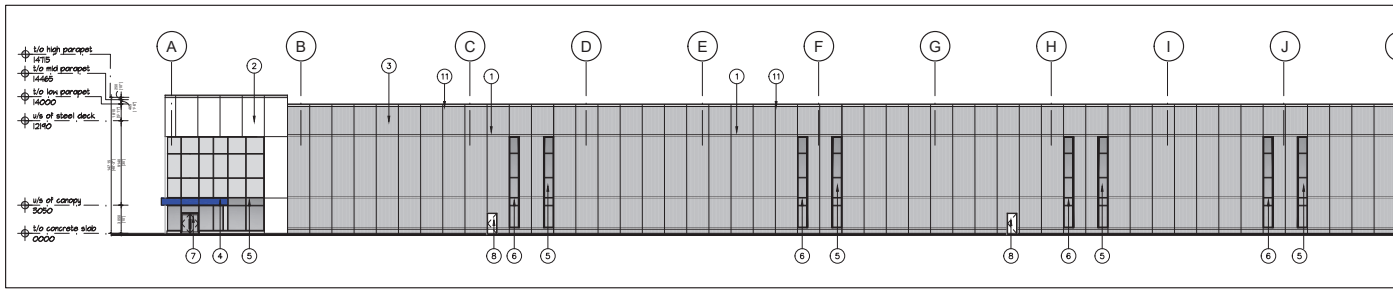
No.	ISSUED	DATE
1	ISSUED FOR SPA	MAY 21 2021
2	RE-ISSUED FOR SPA	OCT. 8 2021



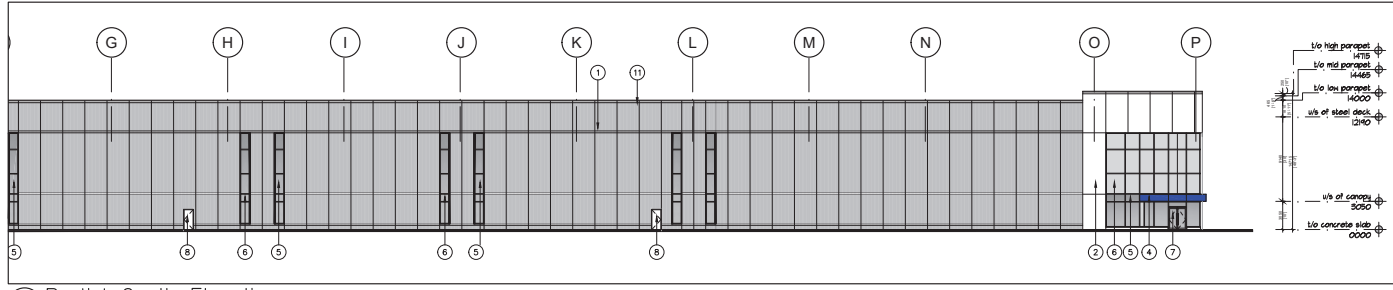
1 Partial West Elevation  
A-3.0 Scale = 1:250



2 Partial West Elevation  
A-3.0 Scale = 1:250



3 Partial South Elevation  
A-3.0 Scale = 1:250



4 Partial South Elevation  
A-3.0 Scale = 1:250

**LEGEND**

- FLEX WALL RIBBED PRECAST CONCRETE PANELS. COLOUR TO BE WHITE.
- ALUMINUM COMPOSITE PANELS BY ALPOLIC OR APPROVED EQUAL. COLOUR: WHITE.
- ALUMINUM COMPOSITE PANELS BY ALPOLIC OR APPROVED EQUAL. COLOUR: GREY.
- CANOPY CLAD IN ALUMINUM COMPOSITE PANELS (COLOUR: BLUE)
- THERMAL DOUBLE GLAZING (GREY TINT) IN PREFINISHED ALUMINUM CURTAIN WALL FRAMES. COLOUR OF CURTAIN WALL CAPS: CHARCOAL ANODIZED ALUMINUM. C/W BRO-FRIENDLY VISUAL MARKERS.
- SPANDREL GLAZING IN PREFINISHED ALUMINUM CURTAIN WALL FRAMES. COLOUR OF SPANDREL: DARY GREY TINT. COLOUR OF CURTAIN WALL CAPS: CHARCOAL ANODIZED ALUMINUM.
- CLEAR TEMPERED THERMAL GLASS AND ALUMINUM DOORS. COLOUR OF ALUMINUM TO MATCH CURTAIN WALL CAPS.
- INSULATED HOLLOW METAL MAN DOOR IN THERMAL PRESSED STEEL FRAME. DOOR AND FRAME PAINTED TO MATCH ADJACENT INSULATED PRECAST.
- INSULATED HOLLOW METAL SECTIONAL OVERHEAD DOOR C/W 305mm x 200mm (W) X LEXAN INSERT 4275mm x 4885mm (H) (W) COLOUR TO BE FUTURE SELECTION.
- INSULATED HOLLOW METAL SECTIONAL OVERHEAD DOOR C/W DOOR SEAL, DOOR LEVELLER, DOOR BUMPERS AND 305mm x 200mm (W) X LEXAN INSERT. 305mm (W) X 3555mm (H). COLOUR TO BE WHITE.
- PREFINISHED METAL CAP FLASHING. COLOUR TO MATCH PRECAST BELOW.
- STEEL GRATE EXTERIOR STAIR. PRIMED & MARINE OIL BASE PAINTED GREY.

**NOTE:**  
STEEL ROOF TOP UTILITY AND MECHANICAL EQUIPMENT ARE VISIBLE FROM PUBLIC VIEW. IT WOULD APPROPRIATELY SCREENED WITH SCREENING THAT IS ARCHITECTURALLY CONSISTENT AND INTEGRATED WITH THE DESIGN OF THE BUILDING.

**CITY OF BRAMPTON BUILDING ELEVATIONS APPROVED**  
 subject to an agreement   
 On This \_\_\_ Day of \_\_\_\_\_  
 Allan Parsons, MCIP, RPP,  
 Director, Development Services

No.	REVISION	DATE
-----	----------	------

**BALDASSARRA**  
Architects | Inc.

30 Great Gulf Drive, Unit 20 | Concord ON | L4K 0K7  
T. 905.660.0722 | www.baldassarra.ca



OWNERS INFORMATION

**Sandalwood & Hurontario**  
Brampton, ON

**ELEVATIONS Building B**  
SPA-2021-0113

DATE	DRAWN BY	CHECKED BY	SCALE
APR. 2021	HP	AS	AS SHOWN

PROJECT No. P-20061 DRAWING No. A-3.1