

WAREHOUSE CLEAR HEIGHT = 20'

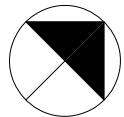


AREA SUMMARY

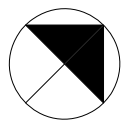
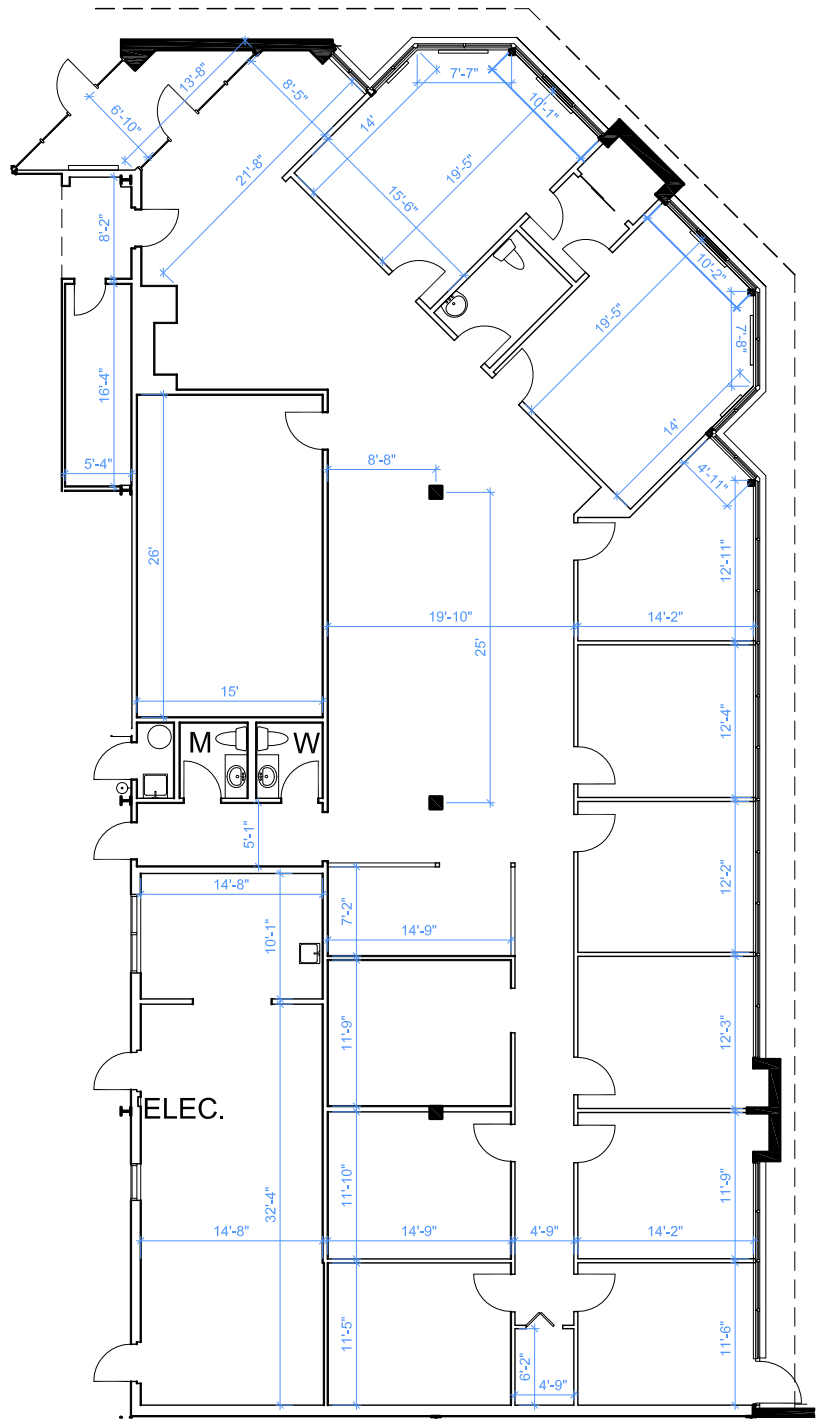
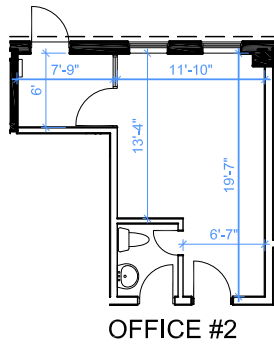
	RENTABLE AREA
OFFICE #1	5,610 S.F.
OFFICE #2	316 S.F.
WAREHOUSE	77,027 S.F.
SPRINKLER ROOM	152 S.F.
HYDRO ROOM	147 S.F.
TOTAL	83,252 S.F.

ABOVE INFORMATION ESTABLISHED ACCORDING TO THE BOMA/SIOR INDUSTRIAL STANDARD ANSI / BOMA Z65.2 2019 SINGLE TENANT OCCUPANCY

See additional page for enlarged office layouts



**1195 Clark Blvd
Brampton, ON
Floor Plan - Area Summary**



1195 Clark Blvd
 Brampton, ON
 Office Portions