

**INDUSTRIAL UNIT FOR LEASE
IN A WELL-ESTABLISHED BUSINESS PARK**

**4170 SLADEVIEW CRES,
MISSISSAUGA**



Listing Team:

TAYLOR FARRIS*

Associate Vice President
Direct: +1 905 330 6636
taylor.farris@colliers.com

BRENNAN EASTMURE*, SIOR

Senior Vice President
Direct: +1 416 620 2858
brennan.eastmure@colliers.com

CARTER ARMSTRONG

Sales Representative
Direct: +1 416 620 2858

Presented By:



WELCOME TO SLADEVIEW CRESCENT MISSISSAUGA



Industrial unit for lease in a well-established business park in Mississauga. This multi-unit complex offers easy access 400-series highways and is in close proximity to Pearson International Airport.



Professionally owned and managed by Pure Industrial



22' clear height



Strategically located in close proximity to major 400-series arterial Highways



Easy access to a highly desirable Mississauga/Peel labour pool



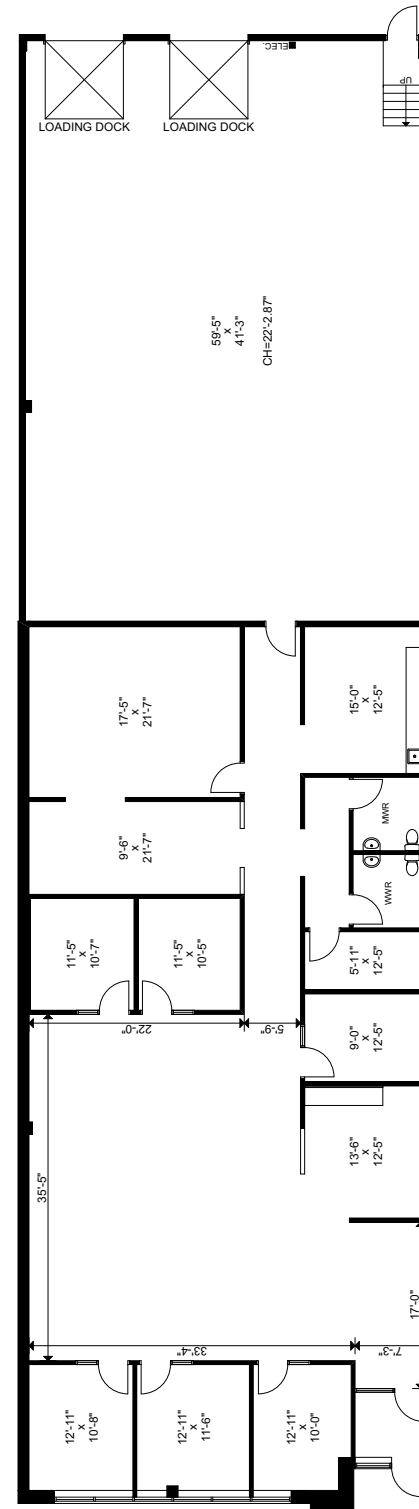
Only 26km to Pearson International Airport and 29km Brampton's CN Intermodal yard

UNIT OVERVIEW

4170 Sladeview Crescent, Unit 2, Mississauga

Building Area	6,358 SF
Office Area	3,806 SF
Warehouse Area	2,552 SF
Clear Height	22'
Shipping	2 TL
Possession	TBD
Taxes (T.M.I)	\$5.01 (2025)

- Clean precast unit
- Located amongst a robust and diverse labour pool
- Strategically located in close proximity to 400-series highways (401,407, 410, 403, & 427)
- Functional clear height
- Practical shipping accommodates 53' trailers

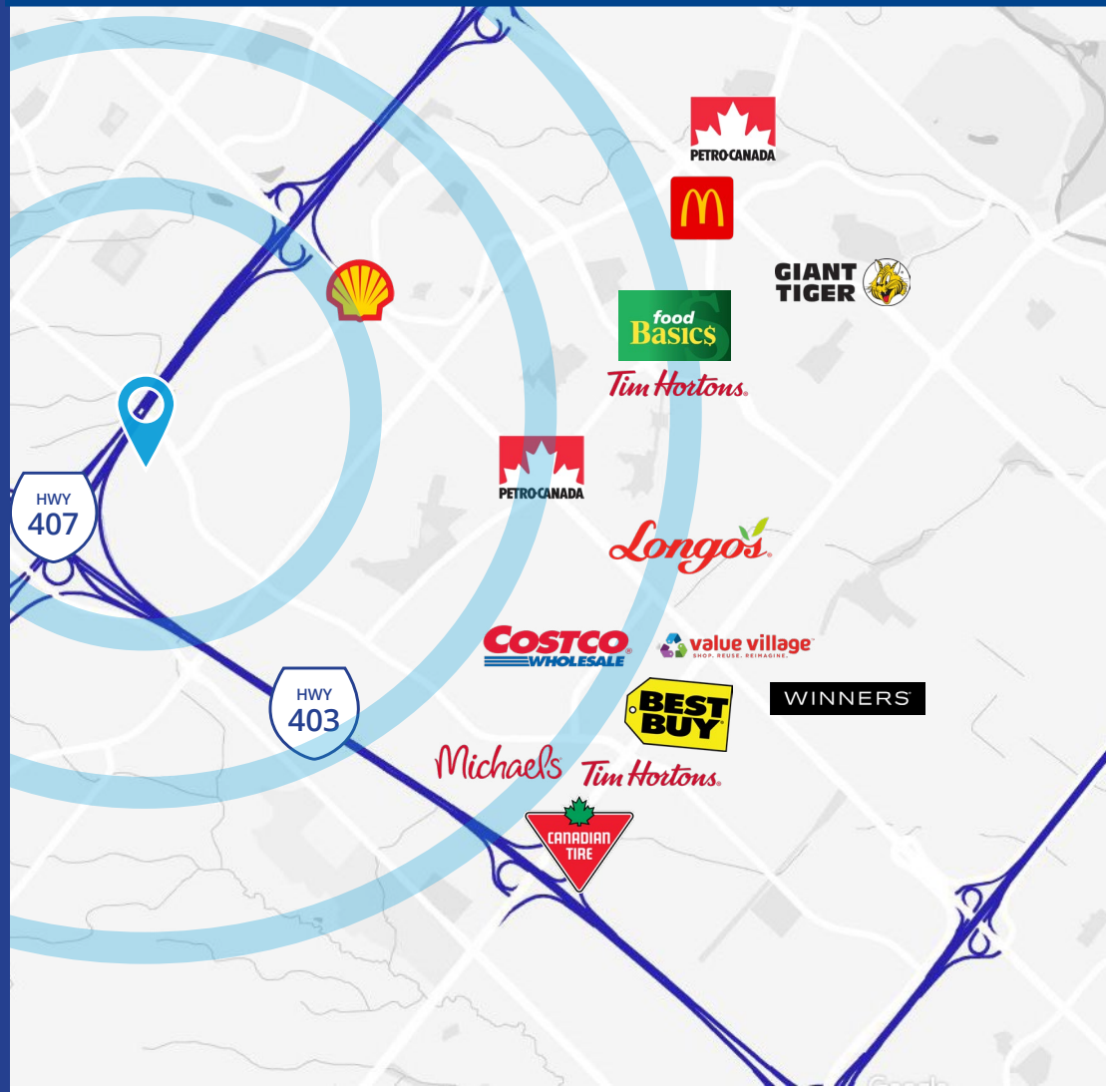


PHOTOS



AMENITIES

The properties enjoy a strategic position surrounded by prominent businesses such as Costco, Longos, and Canadian Tire, providing convenient access to a diverse range of supplies and resources for industrial operations. Additionally, its proximity to major highways, including Highways 403 and 401, offers excellent connectivity and seamless transportation of goods and materials, ensuring efficient distribution and logistics capabilities. Situated within a vibrant industrial hub, this property presents an advantageous location for businesses, fostering networking opportunities and facilitating collaboration within a thriving industrial community.



Restaurants (Under 5 mins of walking)

- Tim Hortons
- McDonalds
- Boston Pizza



Hospitals

- Mississauga Oakville Veterinary Emergency and Specialty Hospital - 9 min
- Credit Valley Hospital - 8 min



Banks

- Bank of Montreal - 4 min drive
- Royal Bank of Canada- 3 min drive



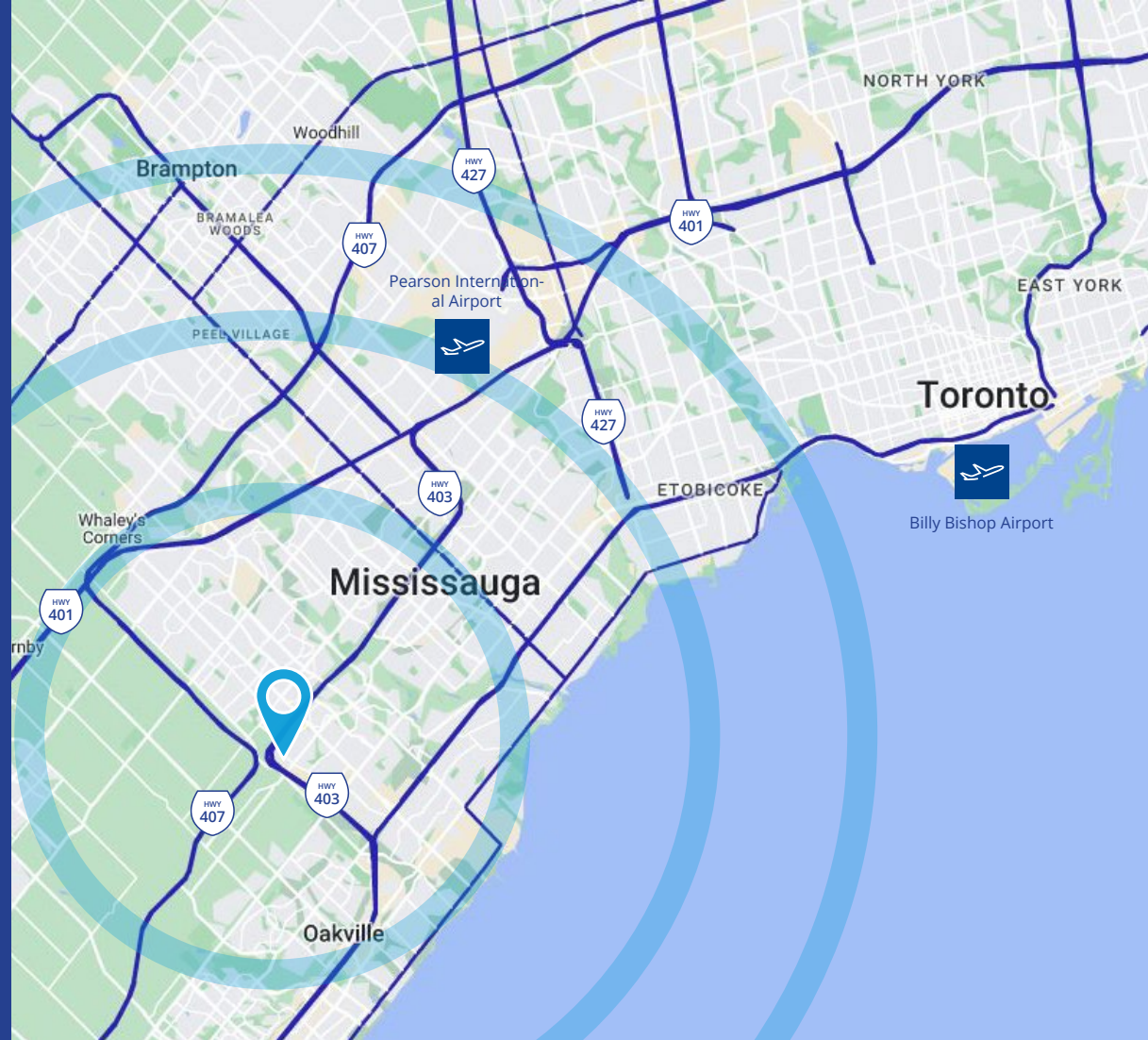
Transit

- Bus routes 31, 36, 321

PURE MOVEMENT

Connecting to the GTA and beyond

The property is located in Mississauga, only 28 KM from Toronto Pearson International Airport, Canada's largest and busiest airport, and less than 90-minutes to the US border, creating seamless accessibility domestically and internationally. Downtown Toronto is also just a 30-minute drive away.



DRIVE TIMES



45 Minutes
Downtown Toronto



28 Minutes
Brampton CN
Intermodal Yard



25 Minutes
Toronto Pearson
International Airport

401

11 Minutes
Highway 401

407

16 Minutes
Highway 407

403

3 Minutes
Highway 403

OUR TEAM



Pure Industrial (“Pure”) is one of Canada’s leading providers of industrial real estate. Headquartered in Toronto, with offices in Montreal, Quebec City, and Vancouver, Pure owns and operates a 42+ million square foot portfolio of high-quality and well-located assets, ranging from small warehouses to large industrial developments.

Pure is strategically focused on developing and refining its unique industrial real estate offering in order to serve the needs of customers in locations critical to the Canadian supply chain, from the first mile to the last.

Pure prides itself on its professional and customer service-oriented team, and seeks to build long-term relationships with tenants by providing highly responsive and personalized service.

PUREINDUSTRIAL.CA

4170 SLADEVIEW CRESCENT, MISSISSAUGA



Colliers is a leading diversified professional services and investment management company. With operations in 65 countries, our more than 15,000 enterprising professionals work collaboratively to provide expert advice to real estate occupiers, owners, and investors. With annualized revenues of \$3.6 billion (\$4.0 billion including affiliates) and \$46 billion of assets under management, we maximize the potential of property and accelerate the success of our clients and our people.

Learn more at corporate.colliers.com
Twitter @Colliers or LinkedIn.

COLLIERSCANADA.COM





CONTACT

TAYLOR FARRIS*

Associate Vice President
Direct: +1 905 330 6636
taylor.farris@colliers.com

BRENNAN EASTMURE*, SIOR

Senior Vice President
Direct: +1 416 620 2858
brennan.eastmure@colliers.com

CARTER ARMSTRONG

Sales Representative
Direct: +1 416 620 2858

This document has been prepared by Colliers for advertising and general information only. Colliers makes no guarantees, representations or warranties of any kind, expressed or implied, regarding the information including, but not limited to, warranties of content, accuracy and reliability. Any interested party should undertake their own inquiries as to the accuracy of the information. Colliers excludes unequivocally all inferred or implied terms, conditions and warranties arising out of this document and excludes all liability for loss and damages arising there from. This publication is the copyrighted property of Colliers and/or its licensor(s). Copyright © 2025. All rights reserved. This communication is not intended to cause or induce breach of an existing listing agreement. Colliers Macaulay Nicolls Inc., Brokerage *Sales Representative **NEW CRESCENT, MISSISSAUGA**